



INNOVATIONS FOR LIVING®

R-15 High Density EcoTouch® PINK® Fiberglas™ Insulation for 2x4 Exterior Walls

Product Data Sheet



Product Data

R-15 EcoTouch® Insulation

	Width	Length	Thickness	R-Value ¹
Wood Frame Construction	15" (381mm) 23" (584mm)	93" (2,362mm)	3½" (89mm)	15.0

1. The higher the R-value, the greater the insulating power. Ask your Owens Corning representative for the fact sheet on R-values.

R-15 EcoTouch® Insulation Unfaced and Kraft-faced

Excellent Thermal Performance
Owens Corning™ R-15 EcoTouch® insulation is specifically engineered to solve the efficiency problems of exterior 2x4 walls. “High density” means more fibers per square inch. It delivers a higher R-value per square inch in less space than standard insulation products.

R-15 EcoTouch® insulation is available in batts, unfaced and faced with a kraft vapor retarder.

Long-Term Performance

R-15 EcoTouch® insulation will not hold water, thereby resisting the permanent loss of R-value. When properly installed, R-15 insulation will not settle or deteriorate, ensuring that the insulating value of the insulation is maintained for the life of the product.

Maximum R-Value at Lower Costs

R-15 EcoTouch® insulation is designed to allow the use of a thinner exterior sheathing while still easily achieving high recommended R-values for exterior walls. 3½" thick R-15 EcoTouch® insulation delivers 36% more R-value than standard R-11 fiber glass insulation.

Available Vapor Retarder Facings

Max. by Volume

Kraft

I

Water Absorption

Max. by Volume

Less than 5%

Dimensional Stability

Linear Shrinkage

Less than 0.1%

Surface Burning Characteristics/Building Code Construction Classifications

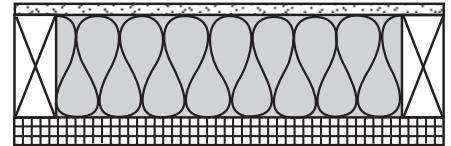
Products	Flame Spread	Smoke Developed	ICBO	BOCAI	SBCCI	ICC
Unfaced	<25	<50	All Types	All Types	All Types	All Types
Kraft-faced	N/R	N/R	III, IV, V	3, 4, 5	III, V, VI	III, IV, V

EcoTouch® Thermal batt insulation complies with Uniform Building Code (ICBO), National Building Code (BOCAI), Standard Building Code (SBCCI), and International Building Code (ICC) model code requirements for building construction types listed above.

Technical Information

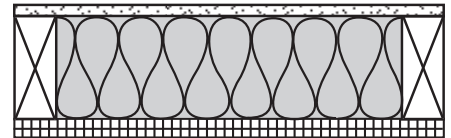
- The kraft facing on this insulation will burn and must not be left exposed. Install facing in substantial contact with the finish material. Protect from open flame or other heat source.
- Owens Corning recommends that a vapor retarder should be used in most climates.
- In climates requiring winter heating, the vapor retarder should be placed toward the warm-in-winter side. (In humid climates, like the Gulf Coast, follow local building practices for vapor retarder placement.)
- In all applications using a vapor retarder, maintaining the facing integrity is important for effective moisture/humidity control. Repair any punctures or tears in the facing by taping.

3½", R-11 Insulation Batts



Standard R-11 batts require the use of thick foam sheathing to achieve the recommended R-19 thermal performance.

3½", R-15 Insulation Batts



New R-15 batts allow the use of thinner, lower cost sheathing to achieve the recommended R-19 thermal performance.

- Due to the potential for skin irritation, unfaced thermal batt insulation should not be used for exposed applications where it will be subject to human contact.

Application

- R-15 EcoTouch® insulation is intended to be friction-fit between exterior wall wood studs.



INNOVATIONS FOR LIVING®

R-15 High Density EcoTouch® PINK® Fiberglas™ Insulation for 2x4 Exterior Walls

Product Data Sheet

- Friction-fit unfaced insulation between studs after cover material has been installed on one side of the cavity.
- Use wire or metal straps to hold insulation in place in applications without a cover material.
- When faced insulation is used, staple attachment flanges to face or side of stud every 8" to 12" to prevent gaps along the edge of the vapor retarder.
- Owens Corning does not require that faced insulation be stapled.

Applicable Standards

Unfaced R-15 EcoTouch® insulation complies with ASTM C665, Type I and ASTM E 136. Kraft-faced R-15 insulation complies with ASTM C665, Type II, Class C. Federal Specification HH-I-521F has been cancelled and is replaced by ASTM C665.

The thermal resistance value for R-15 EcoTouch® insulation was tested in accordance with ASTM C518; R-value for insulation only.

The surface burning characteristics of R-15 EcoTouch® insulation were derived from products tested in accordance with ASTM E84. This standard

is used solely to measure and describe properties of products in response to heat and flame under controlled laboratory conditions. These numerical ratings are not intended to reflect hazards presented by this or any other material under actual fire conditions. Values are reported to the nearest five rating.

The vapor retarder permeance of the kraft facing on R-15 EcoTouch® insulation was developed from tests conducted in accordance with ASTM E96, desiccant method.

Warning: Kraft facing will burn. Do not leave exposed. Facing must be installed in substantial contact with an approved ceiling, floor or wall material. Keep open flame and other heat sources away from facing. Do not place insulation within 3" of light fixtures or similar electrical devices unless device is labeled for contact with insulation. Use only unfaced insulation between wood framing and masonry chimneys. Do not use insulation in spaces around metal chimneys, fireplaces, or flues. Unfaced insulation is considered non-combustible by model building codes. Flame Spread 25 products are flame

spread rated and can be left exposed where codes allow. See package for warnings fire hazard and installation instructions, or call 1-800-GET-PINK®.

Fiber Glass and Mold:

As manufactured, fiber glass insulation is resistant to mold growth. However, mold growth can occur on building materials, including insulation, when it becomes contaminated with organic material and when water is present. To avoid mold growth on fiber glass insulation, remove any water that has accumulated and correct or repair the source of that water as soon as possible. Insulation that has become wet should be inspected for evidence of residual moisture and contamination, and any insulation that is contaminated should be promptly removed and replaced.

Fiber glass insulation may cause temporary irritation to skin, eyes and respiratory tract. Wear long-sleeved, loose fitting clothing, gloves and safety glasses when handling and applying material. Wash with soap and water after handling. Wash work clothes separately and wipe out washer.

Disclaimer of Liability

Technical information contained herein is furnished without charge or obligation and is given and accepted at recipient's sole risk. Because conditions of use may vary and are beyond our control, Owens Corning makes no representation about, and is not responsible or liable for the accuracy or reliability of data associated with particular uses of any product described herein. Nothing contained in this bulletin shall be considered a recommendation.

The GREENGUARD INDOOR AIR QUALITY CERTIFIED mark is a registered certification mark used under license through the GREENGUARD Environmental Institute.

ENERGY STAR and the ENERGY STAR mark are registered trademarks of the U.S. Environmental Protection Agency.



Environment
EcoLogo™ CGD-016



INNOVATIONS FOR LIVING®

OWENS CORNING INSULATING SYSTEMS, LLC
ONE OWENS CORNING PARKWAY
TOLEDO, OHIO 43659

1-800-GET-PINK®
www.owenscorning.com

Pub. No. 21148-E. Printed in U.S.A. June 2012. THE PINK PANTHER™ & ©1964-2012 Metro-Goldwyn-Mayer Studios Inc. All Rights Reserved. The color PINK is a registered trademark of Owens Corning. ©2012 Owens Corning. All Rights Reserved.

